

ECOUSTIC® PANEL PRINT RAW

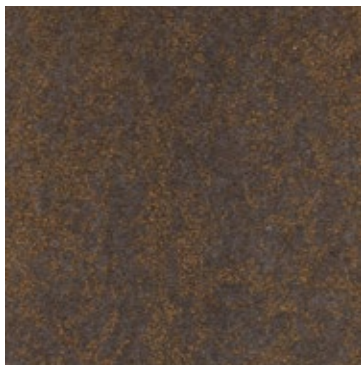
unika vaev

INSTYLE

Hear yourself think®



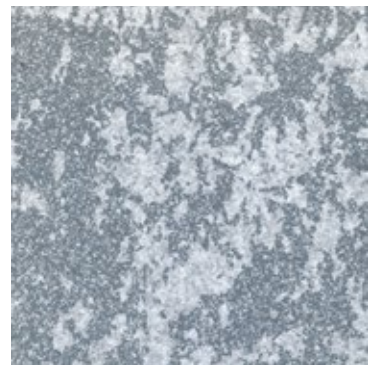
ECOUSTIC® PATTERN PRINT RAW



BRONZE ON TAUPE



FLINT ON JET



MIST ON LIGHT GREY



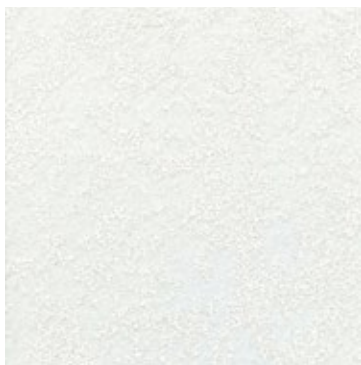
PUTTY ON CHARCOAL



WHITE ON LIGHT GREY



WHITE ON NATURAL



WHITE ON WHITE

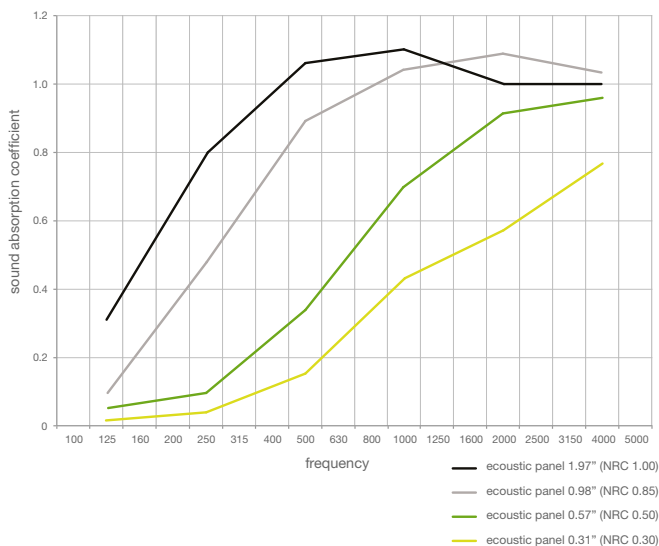
Patterns shown are not to scale
Product may vary in color due to the nature of the media
Please refer to website for current color range

ecoustic® global leaders
by **INSTYLE** in acoustic
products

ECOUSTIC® PANEL PRINT RAW



CONTENT	100% PET (>50% Recycled PET)
DIMENSIONS	Panel- 8'11" x 3'11" (2720mm x 1210mm) Print- 8'10" x 3'10" (2700mm x 1200mm)
THICKNESS	0.31" (8mm) *Stock Item 0.53" (13.5mm) *Custom 0.98" (25mm) *Custom 1.97" (50mm) *Custom 0.47" (12mm) * Custom Screen
PATTERN REPEAT	H: 3'11" (1200mm) W: 8'11" (2700mm)
FLAMMABILITY	CLASS A
ASTM E84	
AS/NZS 1530.3	
AS/ISO 9705	
GB 8624	
APPLICATION	Screen, Wall & Ceiling Panel
ACOUSTIC	NRC: 0.30 - 1.00 Depending on panel thickness



BENEFITS

Improved Sound Absorption: ecoustic® Panel + screen can absorb 30%, 50%, 80% or 100% of sound (depending on the panel thickness) when the panel is directly fixed to a wall.

Improved Pin-ability: ecoustic® Panel + screen features an improved pin-ability compared to similar panel products.

Designed for the Environment: ecoustic® Raw is made from over 50% recycled Pet. ecoustic® Panel is designed to optimally fit with walls and workstations, which results in less labor and materials. Easy to disassemble and separate into the appropriate recycling systems, ecoustic® Raw can be recycled.

Low-VOC + Greentag Level A Certification: ecoustic® Raw is certified Low-VOC and is Greentag Level A Certified.

Green Star: ecoustic® Raw is Greentag Level A Certified and can achieve maximum Green star points.

LEED: 50% post consumer content contributes to LEED MR Credit 4 Recycled content.

Lightweight, Easy to Handle + Install: ecoustic® Raw is an intelligent alternative to traditional panels composed of multiple materials such as particle board, fabric, foam and adhesive. Compared to traditional panels, the semi rigid ecoustic® Panel + Screen is lower in weight, easier to handle and results in reduced transportation costs. ecoustic® Panel + Screen can be trimmed and installed without the need for additional finishes, which reduces labor and material costs. Installation guidelines and care instructions are available on unikavaev.com.

Edging Profile: Natural anodized aluminum edging lengths at 9' (2750mm) (+/- 5mm) with counter sunk holes are available for all ecoustic® Panel thicknesses.

Please Note: Results from performance tests are guidelines only. On site trimming to square each individual panel is essential. This is a hand printed product. Variation in thickness, fiber mix and color as well as flecks and other slight surface blemishes are an inherent feature of this product and are unavoidable. Variation from batch to batch may occur.