

AIRLEAF



unika vaev  
abstracta

Hear yourself think®

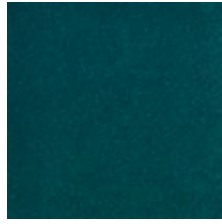
# AIRLEAF COLORS

## STANDARD OPTIONS

### Air Series



(20)  
blue



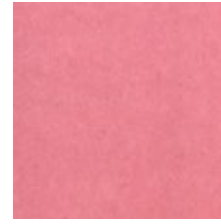
(22)  
petrol



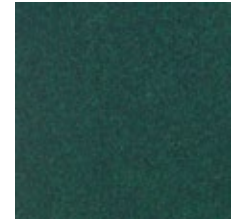
(25)  
turquoise



(30)  
red



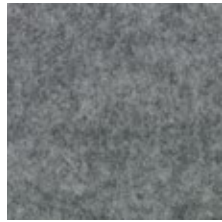
(34)  
light pink



(45)  
dark green



(60)  
light grey



(65)  
grey



(80)  
black

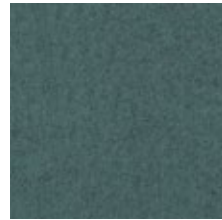


(90)  
white

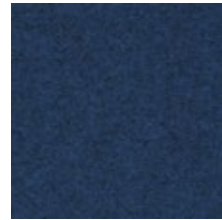
### Blazer



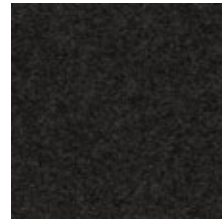
(cuz1n)  
cardiff



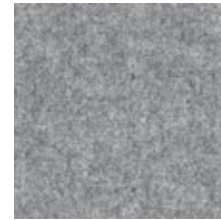
(cuz33)  
latymer



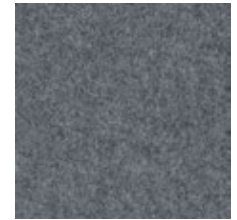
(cuz1w)  
newcastle



(cuz30)  
silcoates



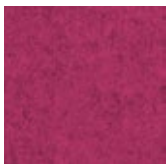
(cuz28)  
silverdale



(cuz1e)  
surrey

## NON-STANDARD OPTIONS

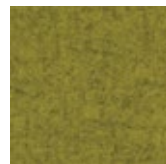
### Air Series



(33)  
magenta



(35)  
orange



(40)  
citron green



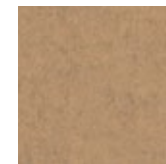
(41)  
light blue



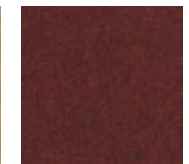
(42)  
purple



(43)  
red pink



(44)  
light brown



(46)  
dark red

Lead times are contingent on color/finish availability  
Product may vary in color due to the nature of the media  
Please refer to website for current color range + larger sample swatch

**unika vaev**  
**abstracta**

# AIRLEAF COLORS

## NON-STANDARD OPTIONS

### Air Series continued



(47)  
dark blue

(48)  
dark brown

(49)  
yellow

(50)  
dark blue  
melange

(51)  
brown grey  
melange

(52)  
dark red  
melange

(53)  
red brown  
melange

(54)  
middle green



(55)  
dark green red  
melange

(56)  
hunter green

(57)  
light green

(70)  
brown

### Blazer



(cuz1J)  
aberlour

(cuz3b)  
abertay

(cuz02)  
aston

(cuz3d)  
barlborough

(cuz2s)  
barnard

(cuz35)  
bromsgrove

(cuz53)  
bryanston

(cuz1k)  
camphill

(cuz2q)  
dartmouth



(cuz58)  
dunhurst

(cuz90)  
edge hill

(cuz1y)  
edinburgh

(cuz2w)  
eynesbury

(cuz47)  
fairfield

(cuz1m)  
glasgow

(cuz62)  
glenalmond

(cuz39)  
goldsmith

(cuz63)  
handcross



(cuz2t)  
holyoke

(cuz1p)  
hull

(cuz67)  
kingsmead

(cuz26)  
knightsbridge

(cuz21)  
magdalene

(cuz1v)  
manchester

(cuz3c)  
marymount

(cuz3a)  
montcrest

(cuz08)  
napier

Lead times are contingent on color/finish availability  
 Product may vary in color due to the nature of the media  
 Please refer to website for current color range + larger sample swatch

**unika vaev**  
**abstracta**

# AIRLEAF COLORS

## NON-STANDARD OPTIONS

Blazer continued



(cuz1l)  
newport



(cuz18)  
oriel



(cuz09)  
oxford



(cuz2x)  
penola



(cuz1r)  
plymouth



(cuz3e)  
scottsdale



(cuz1t)  
sheffield



(cuz86)  
st andrews



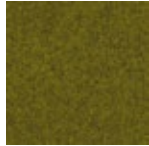
(cuz2r)  
stanford



(cuz31)  
trevelyan



(cuz2y)  
tyndale



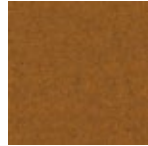
(cuz1f)  
ulster



(cuz2u)  
vassar



(cuz13)  
wellington



(cuz82)  
wesley



(cuz12)  
winchester



(cuz2z)  
woodcroft



Lead times are contingent on color/finish availability  
Product may vary in color due to the nature of the media  
Please refer to website for current color range + larger sample swatch

**unika vaev**  
**abstracta**

# AIRLEAF



<b>DESIGNER</b>	Stefan Borselius
<b>CONTENT</b>	Core: 100% Molded Polyester Felt Cover: 100% Polyester Felt (Air Series) or 100% Virgin Wool (Blazer)
<b>THICKNESS</b>	1.8"
<b>DIMENSIONS</b>	18.3" (h) x 11.3" (w)
<b>WEIGHT</b>	0.3 lbs
<b>FLAMMABILITY</b>	Inquire
<b>ACOUSTIC</b>	NRC: 0.15

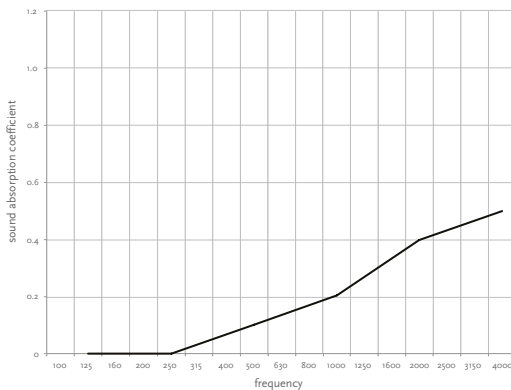
## BENEFITS

**Designed for the Environment:** Airleaf is manufactured on the basis of technical, environmental and production ethical requirements. There are no emissions to air, water or land during the production of Airleaf. The sound-absorbent core of Airleaf contains recycled materials. Airleaf is recyclable.

**Installation:** Airleaf may be mounted to the ceiling or wall with a straight rail in three lengths, 59", 78.75" or 118". Those rails can be joined or cut on site. Modules hook into one another using small plastic clips creating screen partitions.

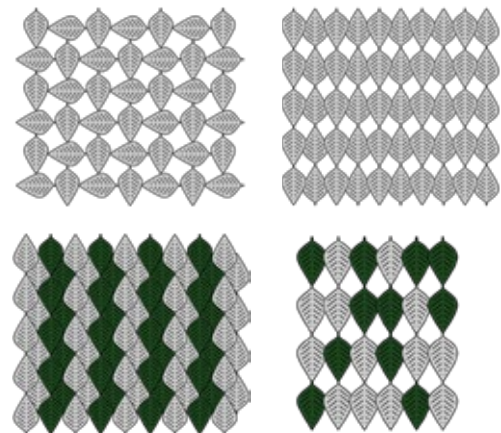
**Improved Sound Absorption:** Airleaf is ideal for high frequency absorption and achieves an NRC 0.15

**Accessories Provided:** Drop ceiling brackets to mount Airleaf directly to a drop ceiling. A wire kit which includes (4) 118" wires, (4) wire locks and hardware to hang the rail a distance from the ceiling. A roller is also available allowing the Airleaf modules roll along the rail, used in lieu of attachment clips.



**APPLICATION** Wall, Ceiling

**DESCRIPTION** Airleaf is designed to gently separate space while building a pleasant soundscape. Leaf shaped sound absorbent molded felt modules can be combined in a variety of patterns to bring nature into interior spaces. Much like an autumn day, Airleaf is available in an abundance of different colors.



**unika vaev**  
**abstracta**